



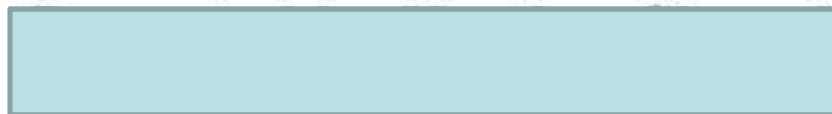
edtea

**Department :**

Economic Development, Tourism and  
Environmental Affairs

**PROVINCE OF KWAZULU-NATAL**

# Overview of waste management in KZN



**1 Metro**  
**10 DMs**  
**43 LMs**







**edtea**

Department :  
Economic Development, Tourism and  
Environmental Affairs

**PROVINCE OF KWAZULU-NATAL**

# NWMS Goals

1. Promote waste minimisation, reuse, recycling and recovery of waste	5. Achieve integrated waste management planning
2. Ensure the effective and efficient delivery of waste services	6. Ensure sound budgeting and financial management for waste services
3. Grow the contribution of the waste sector to the green economy	7. Provide measures to remediate contaminated land
4. Ensure that people are aware of the impact of waste on their health, well-being and the environment	8. Establish effective compliance with and enforcement of the Waste Act





**edtea**

**Department :**  
Economic Development, Tourism and  
Environmental Affairs

**PROVINCE OF KWAZULU-NATAL**

# NWMS Goals

<b>1. Promote waste minimisation, reuse, recycling and recovery of waste</b>	5. Achieve integrated waste management planning
2. Ensure the effective and efficient delivery of waste services	6. Ensure sound budgeting and financial management for waste services
3. Grow the contribution of the waste sector to the green economy	7. Provide measures to remediate contaminated land
4. Ensure that people are aware of the impact of waste on their health, well-being and the environment	8. Establish effective compliance with and enforcement of the Waste Act







**edtea**

**Department :**  
Economic Development, Tourism and  
Environmental Affairs  
**PROVINCE OF KWAZULU-NATAL**

- Non-financial support provided to recyclers on an ongoing basis
- This year commencing with Operation Vula programme (R5 million for recycling)





edtea

Department :  
Economic Development, Tourism and  
Environmental Affairs

PROVINCE OF KWAZULU-NATAL

# NWMS Goals

1. Promote waste minimisation, reuse, recycling and recovery of waste	5. Achieve integrated waste management planning
<b>2. Ensure the effective and efficient delivery of waste services</b>	6. Ensure sound budgeting and financial management for waste services
3. Grow the contribution of the waste sector to the green economy	7. Provide measures to remediate contaminated land
4. Ensure that people are aware of the impact of waste on their health, well-being and the environment.	8. Establish effective compliance with and enforcement of the Waste Act





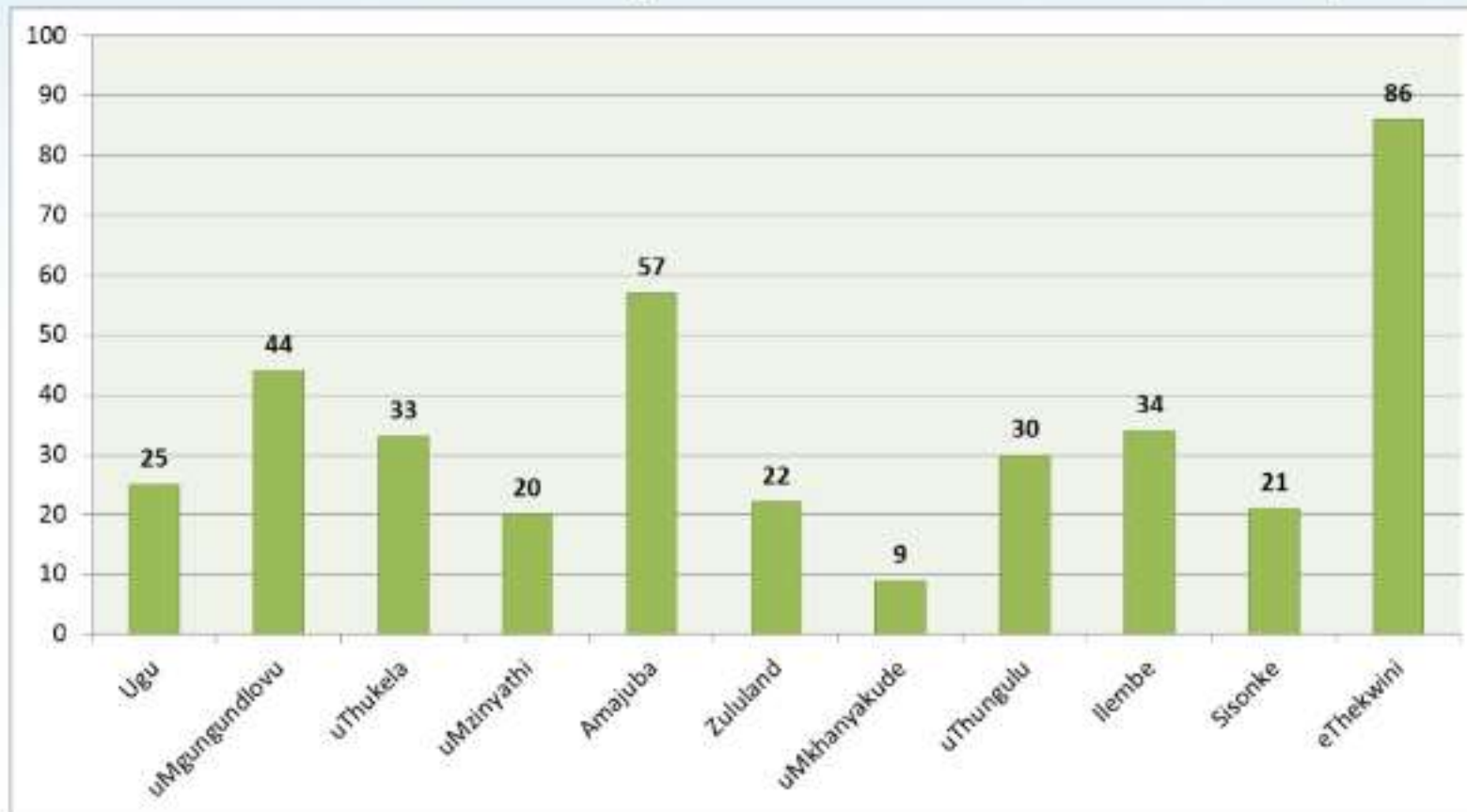


**edtea**

Department :  
Economic Development, Tourism and  
Environmental Affairs

**PROVINCE OF KWAZULU-NATAL**

## KZN households with weekly waste collection service per district



Ref:  
Cens  
2011





**edtea**

**Department :**  
Economic Development, Tourism and  
Environmental Affairs

**PROVINCE OF KWAZULU-NATAL**

- IDP Reviews
- Licensing of unlicensed landfill sites: 95% complete







edtea

Department :  
Economic Development, Tourism and  
Environmental Affairs

PROVINCE OF KWAZULU-NATAL

# NWMS Goals

1. Promote waste minimisation, reuse, recycling and recovery of waste	5. Achieve integrated waste management planning
2. Ensure the effective and efficient delivery of waste services	6. Ensure sound budgeting and financial management for waste services
<b>3. Grow the contribution of the waste sector to the green economy</b>	7. Provide measures to remediate contaminated land
4. Ensure that people are aware of the impact of waste on their health, well-being and the environment.	8. Establish effective compliance with and enforcement of the Waste Act





**edtea**

**Department :**

Economic Development, Tourism and  
Environmental Affairs

**PROVINCE OF KWAZULU-NATAL**

- Licensing of various waste beneficiation facilities:
  - Pelletisation plant
  - Waste tyre recycling
  - Metals recycling
  - PET recycling







edtea

Department :  
Economic Development, Tourism and  
Environmental Affairs

PROVINCE OF KWAZULU-NATAL

# NWMS Goals

1. Promote waste minimisation, reuse, recycling and recovery of waste	5. Achieve integrated waste management planning
2. Ensure the effective and efficient delivery of waste services	6. Ensure sound budgeting and financial management for waste services
3. Grow the contribution of the waste sector to the green economy	7. Provide measures to remediate contaminated land
<b>4. Ensure that people are aware of the impact of waste on their health, well-being and the environment</b>	8. Establish effective compliance with and enforcement of the Waste Act







**edtea**

**Department :**  
Economic Development, Tourism and  
Environmental Affairs

**PROVINCE OF KWAZULU-NATAL**





**edtea**

**Department :**  
Economic Development, Tourism and  
Environmental Affairs

**PROVINCE OF KWAZULU-NATAL**

# NWMS Goals

1. Promote waste minimisation, reuse, recycling and recovery of waste	<b>5. Achieve integrated waste management planning</b>
2. Ensure the effective and efficient delivery of waste services	6. Ensure sound budgeting and financial management for waste services
3. Grow the contribution of the waste sector to the green economy	7. Provide measures to remediate contaminated land
4. Ensure that people are aware of the impact of waste on their health, well-being and the environment.	8. Establish effective compliance with and enforcement of the Waste Act







**edtea**

**Department :**

Economic Development, Tourism and  
Environmental Affairs

**PROVINCE OF KWAZULU-NATAL**

- 24 municipalities with up-to-date IWMPs
- 12 municipalities do not have IWMPs
- Municipal waste management plans are influenced through IDP assessment process
- Provincial IWMP completed in 2011, but did not undergo Section 72 consultation process







edtea

Department :  
Economic Development, Tourism and  
Environmental Affairs

PROVINCE OF KWAZULU-NATAL

# NWMS Goals

1. Promote waste minimisation, reuse, recycling and recovery of waste	5. Achieve integrated waste management planning
2. Ensure the effective and efficient delivery of waste services	<b>6. Ensure sound budgeting and financial management for waste services</b>
3. Grow the contribution of the waste sector to the green economy	7. Provide measures to remediate contaminated land
4. Ensure that people are aware of the impact of waste on their health, well-being and the environment	8. Establish effective compliance with and enforcement of the Waste Act





**edtea**

**Department :**  
Economic Development, Tourism and  
Environmental Affairs

**PROVINCE OF KWAZULU-NATAL**

- IDP Reviews
- GMC Evaluation





edtea

Department :  
Economic Development, Tourism and  
Environmental Affairs

PROVINCE OF KWAZULU-NATAL

# NWMS Goals

1. Promote waste minimisation, reuse, recycling and recovery of waste	5. Achieve integrated waste management planning
2. Ensure the effective and efficient delivery of waste services	6. Ensure sound budgeting and financial management for waste services
3. Grow the contribution of the waste sector to the green economy	<b>7. Provide measures to remediate contaminated land</b>
4. Ensure that people are aware of the impact of waste on their health, well-being and the environment	8. Establish effective compliance with and enforcement of the Waste Act





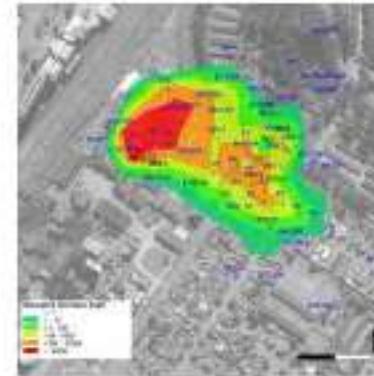


edtea

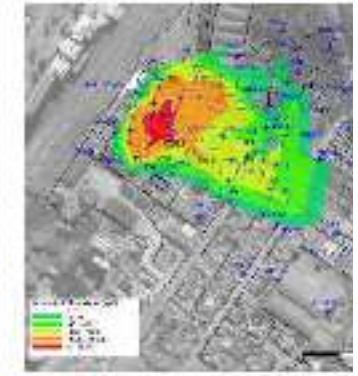
Department :  
Economic Development, Tourism and  
Environmental Affairs  
PROVINCE OF KWAZULU-NATAL

- Bayer/LANXESS Chrome Remediation
- Petrol filling stations
- Comment on site assessment reports

### Computer Interpolated Plumes Aquifer 2



2008



September 2017

LANXESS

Bay





edtea

Department :  
Economic Development, Tourism and  
Environmental Affairs

PROVINCE OF KWAZULU-NATAL

# NWMS Goals

1. Promote waste minimisation, reuse, recycling and recovery of waste	5. Achieve integrated waste management planning
2. Ensure the effective and efficient delivery of waste services	6. Ensure sound budgeting and financial management for waste services
3. Grow the contribution of the waste sector to the green economy	7. Provide measures to remediate contaminated land
4. Ensure that people are aware of the impact of waste on their health, well-being and the environment.	<b>8. Establish effective compliance with and enforcement of the Waste Act</b>







**edtea**

**Department :**  
Economic Development, Tourism and  
Environmental Affairs

**PROVINCE OF KWAZULU-NATAL**

- 75% of WMLs finalised within time frames  
(6 applications)
- 44 audits of waste management facilities
- Annual landfill site compliance audit report
- 90% of Pollution and Waste officials have  
received EMI training
- 20 landfill site inspections planned





edtea

Department :  
Economic Development, Tourism and  
Environmental Affairs  
PROVINCE OF KWAZULU-NATAL

- Example of landfill site compliance report

	Licence	Operating Plan	Access	Register	Access control	Liner	Controlled disposal	Cover	Equipment	Personnel	Leachate management	Stormwater management	Groundwater monitoring	Audits	Nuisance	Monitoring committee	Waste Information	Recycling facility
Nordale Landfill Site	Green	Green	Green	Green	Green	Red	Green	Yellow	Green	Green	Red	Red	Red	Green	Yellow	Red	Red	Yellow
Hlabisa Landfill Site	Green	Red	Yellow	Red	Red	Red	Red	Red	Red	Red	Red	Red	Red	Red	Red	Red	Red	Yellow
Big 5 Hlabisa Landfill site	Green	Red	Yellow	Red	Red	Red	Red	Red	Red	Red	Red	Red	Red	Red	Red	Red	Red	Yellow
Mkhuze Waste Site	Yellow	Red	Yellow	Green	Green	Red	Red	Yellow	Red	Yellow	Red	Red	Red	Red	Yellow	Red	Red	Yellow
Mbazwana Landfill site	Green	Yellow	Green	Green	Green	Red	Yellow	Red	Red	Green	Red	Red	Yellow	Red	Yellow	Red	Red	Yellow
Manguzi Landfill site	Green	Yellow	Green	Green	Green	Red	Yellow	Red	Yellow	Green	Red	Red	Yellow	Red	Yellow	Red	Red	Green







**edtea**

**Department :**  
Economic Development, Tourism and  
Environmental Affairs

**PROVINCE OF KWAZULU-NATAL**

# Gaps identified

- Waste Information – still not reliable
- Implementation of Strategies and Plans
- Interaction with business sectors, industry
- Cooperation between municipalities, Province and National
- Landfill site compliance
- Legislative barriers for organic waste beneficiation
- New / emerging waste streams / issues





**edtea**

**Department :**

Economic Development, Tourism and  
Environmental Affairs

**PROVINCE OF KWAZULU-NATAL**

# Thank-you

